

Anatomy: LOWER EXTREMITY  
 Sub-Anatomy: Ankle- 1.5T MR Arthro

-Exams **ORDERABLE- ANKLE**  
 - Routine Coil: Ankle/Chimney coil

SEQUENCE - BASICS																
PLANE	SEQ	Slice thickness (mm)	Misc / Comment	MT X	gap	% R F O V	TR	TE	Nex Avg Acq	NS	ETL Turbo Factor	Phase Encode	Scan TIME (min)	Pixel Shift BW-kHz		
<b>ROUTINE</b>																
	3 plane scout		Only GRE													
1	Cor fs T1	3.5x0.4x0.5			10%		600	6-9								
2	Sag fs T1	3.5x0.4x0.5			10%		600	6-9								
3	Ax fsT1	3.5x0.4x0.5			10%		600	6-9								
4	Ax fsPD	3.5x0.4x0.5			10%		4000	35-40								
5	Cor fs PD	3.5x0.4x0.5			10%		4000	35-40								
6	Sag PD	3.5 x0.4x0.5			10%		4000	40-45								
7	Ax T1 VIBE no FS															
↓ <b>OPTIONAL</b> ↓																

**Instructions: FOV and Coverage-** On axials, cover 1-2 cm above the ankle joint to skin surface. On coronals, cover from posterior skin to base of metatarsals. On sagittals, cover from slightly medial to medial malleolus to slightly lateral to lateral malleolus.

**Large subject:** Increase voxel-4x0.5x0.6 mm, if problem with SNR or wrap, etc- call OPB/PMH for remote monitoring help.

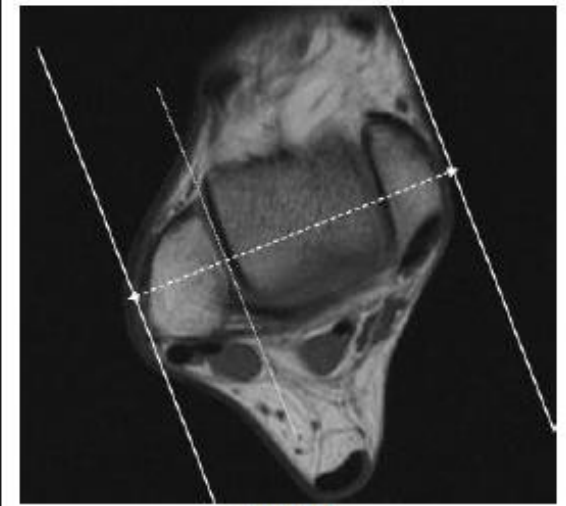
**Others-** Always put marker at the site of most pain, injury or swelling. If motion observed, stop the scan, instruct patient to lay still and repeat the sequence.



Axial



Coronal



Sagittal